

# Raise your expectations for living with ATTR-cardiac amyloidosis\*



Actor portrayals.

## Attruby is proven to positively impact:



Survival



Hospitalizations due to heart issues



Quality of life

\*ATTR-cardiac amyloidosis is also known as transthyretin-mediated cardiomyopathy (ATTR-CM).

### What is Attruby<sup>™</sup> (acoramidis)?

Attruby is a prescription medicine used to treat adults with a disease that affects the heart muscle called cardiomyopathy of wild-type or variant transthyretin-mediated amyloidosis (ATTR-CM), to reduce death and hospitalization related to heart problems.

It is not known if Attruby is safe and effective in children.

### IMPORTANT SAFETY INFORMATION

**Before taking Attruby, tell your healthcare provider about all your medical conditions, including if you:**

- are pregnant or plan to become pregnant

**Please see Important Safety Information throughout and accompanying Important Facts Sheet for Attruby. For the Full Prescribing Information and Patient Information for Attruby, visit [Attruby.com/PI](https://www.attruby.com/PI).**





Actor portrayals.

“There’s gonna  
be ups and downs,  
but the biggest  
thing for me is  
maintaining  
a sense of hope.”

– **James**

Living with ATTR-cardiac amyloidosis.\*

\*ATTR-cardiac amyloidosis is also known as transthyretin-mediated cardiomyopathy (ATTR-CM).

# ATTR-cardiac amyloidosis\* is a serious, progressive heart condition

There are 2 forms of ATTR-cardiac amyloidosis (pronounced CAR-dee-ak Am-ee-loy-DOE-sis):

**Wild type**, which is caused by natural aging

**Hereditary**, which is passed down through the family

Untreated ATTR-cardiac amyloidosis can stop you from living life the way you want



Missing out on important life moments



Having trouble with daily tasks



Giving up activities you enjoy

Without intervention, issues become serious



Heart failure



More hospital visits



Early death

\*ATTR-cardiac amyloidosis is also known as transthyretin-mediated cardiomyopathy (ATTR-CM).



# Getting the right diagnosis can take time

## Serious symptoms are often overlooked or misdiagnosed

Because the symptoms associated with ATTR-cardiac amyloidosis are shared with other heart conditions, a formal diagnosis can take years.

### Did you know?

APPROX **60%** of people diagnosed with ATTR-cardiac amyloidosis experience **carpal tunnel syndrome**

UP TO **40%** of people also **experience spinal stenosis**, when the space inside the backbone is too small, causing pain, tingling, numbness, and muscle weakness



Actor portrayals.

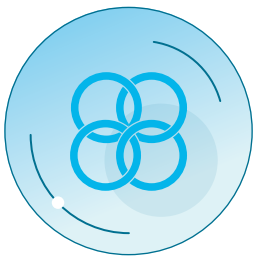
### Other symptoms may include:

- Shortness of breath
- Tiredness or weakness
- Swelling in legs and feet
- Irregular heartbeat
- Digestive problems
- Nerve pain

# ATTR-cardiac amyloidosis\* happens when TTR becomes unstable and misfolds

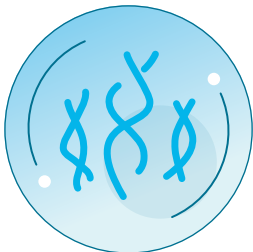
## Understanding TTR will help you understand ATTR-cardiac amyloidosis

The TTR protein is an **important** protein that helps **transport** the hormone **thyroxine** (which regulates your metabolism) and **retinol** (vitamin A), in your body; hence the name TTR: “trans-thy-retin.”



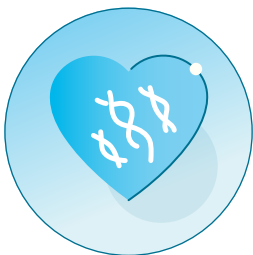
### Stable TTR is healthy TTR

TTR is made up of 4 small proteins held tightly together through strong bonds.



### Unstable TTR creates amyloid fibrils

When the bonds become unstable, TTR breaks down into abnormal proteins called amyloid fibrils, which then build up in the body, causing damage.



### Amyloid fibrils are trouble

The buildup of amyloid fibrils thickens the walls of the heart. That means the heart cannot pump blood properly, causing the symptoms of heart failure you may be familiar with, such as breathlessness, fatigue, and swelling of the legs.

\*ATTR-cardiac amyloidosis is also known as transthyretin-mediated cardiomyopathy (ATTR-CM).  
TTR=transthyretin.





Actor portrayal.

The more stable your TTR, the less likely it will break down and cause trouble.

TTR=transthyretin.





Actor portrayals

TTR=transthyretin.

Please see Important Safety Information throughout and accompanying Important Facts Sheet for Attruby. For the Full Prescribing Information and Patient Information for Attruby, visit [Attruby.com/PI](https://www.attruby.com/PI).

TTR stabilization was seen **as early as 28 days**, through 30 months, in laboratory tests of people taking Attruby.



# Stabilize TTR with Attruby

Attruby is a TTR stabilizer that treats wild-type and hereditary ATTR-cardiac amyloidosis\*



**of TTR proteins were stabilized**  
with Attruby as seen in laboratory tests

Attruby slows the buildup of abnormal proteins by attaching to TTR and stabilizing the bonds holding the protein together

## How can I tell if Attruby is stabilizing my TTR?

- ✓ Ask your doctor about a serum TTR test, also known as a prealbumin blood test
- ✓ Your doctor will help you understand how the test works and share what an appropriate level looks like for you
- ✓ The higher your number is on the scale, the more **stable TTR** there is in your body

\*ATTR-cardiac amyloidosis is also known as transthyretin-mediated cardiomyopathy (ATTR-CM).  
TTR=transthyretin.

## Important Safety Information (cont'd)

Before taking Attruby, tell your healthcare provider about all your medical conditions, including if you:

- are breastfeeding or plan to breastfeed

Please see Important Safety Information throughout and accompanying [Important Facts Sheet](#) for Attruby. For the Full Prescribing Information and Patient Information for Attruby, visit [Attruby.com/PI](https://www.attruby.com/PI).

 **Attruby**<sup>™</sup>  
(acoramidis) 356 mg tablet

# Proven results with Attruby

## Attruby delivered rapid and sustained results in wild-type and hereditary ATTR-cardiac amyloidosis\*

In a 30-month clinical study, people treated with Attruby did significantly better than those not taking Attruby (placebo). The results were based on a combined measure of survival and hospitalizations due to heart issues.

When comparing results in people treated with and without Attruby at 30 months, **people taking Attruby achieved:**

# 81%

SURVIVAL RATE:

vs

**74% without**  
Attruby

# 50%

reduction in  
the number of  
hospitalizations  
due to  
heart issues



**A BETTER  
HEALTH-RELATED  
QUALITY OF LIFE†**

# 3

months

**Positive impact** on survival and hospitalizations due to heart issues were observed as early as **3 months**.

\*ATTR-cardiac amyloidosis is also known as transthyretin-mediated cardiomyopathy (ATTR-CM).

†The treatment effect of Attruby on health status was assessed using the Kansas City Cardiomyopathy Questionnaire-Overall Summary (KCCQ-OS) score composed of the Physical Limitation, Symptom, Social Limitation, Quality of Life, and Self-Efficacy domains, respectively.

Please see **Important Safety Information** throughout and accompanying **Important Facts Sheet** for Attruby. For the Full Prescribing Information and Patient Information for Attruby, visit [Attruby.com/PI](https://www.attruby.com/PI).



Actor portrayals.



# Positive impact on quality of life

When comparing health-related quality of life measures\* in people treated with and without Attruby in a 30-month clinical study, people treated with Attruby reported better results†:



## Symptoms

Reduced shortness of breath and fatigue, as well as less swelling in the legs, ankles, and feet



## Physical abilities

Including the ability to walk 1 block on level ground, and climbing up a short flight of stairs without stopping‡



## Social engagement

People were able to experience better overall enjoyment of life, such as visiting with family or friends§

**Positive impact on quality of life was first observed after 3 months.\***

\*The treatment effect of Attruby on health status was assessed using the Kansas City Cardiomyopathy Questionnaire-Overall Summary (KCCQ-OS) score composed of the Physical Limitation, Symptom, Social Limitation, Quality of Life, and Self-Efficacy domains, respectively.

†At the end of the 30-month study of adults with ATTR-cardiac amyloidosis, on average, people experienced a decline in their KCCQ-OS, a measure of quality of life.

‡Other physical improvements included ability to do household chores and showering or bathing independently.

§This also included better engagement with their hobbies or enjoying intimate relationships.

## Important Safety Information (cont'd)

Tell your healthcare provider about all the medicines you take, including prescription and over-the-counter medicines, vitamins, and herbal supplements.

Please see Important Safety Information throughout and accompanying [Important Facts Sheet for Attruby](#). For the Full Prescribing Information and Patient Information for Attruby, visit [Attruby.com/PI](https://www.attruby.com/PI).

 **Attruby**<sup>TM</sup>  
(acoramidis) 356 mg tablet

# Feel confident starting Attruby

## Attruby offers proven clinical safety

**Possible side effects** may include diarrhea and abdominal pain. For most people, these side effects were mild and went away, so they could continue taking Attruby.

## Important Safety Information (cont'd)

These are not all of the possible side effects of Attruby.

Call your doctor for medical advice about side effects. You may report side effects to FDA at 1-800-FDA-1088 or [www.fda.gov/medwatch](http://www.fda.gov/medwatch).

Please see Important Safety Information throughout and accompanying [Important Facts Sheet](#) for Attruby. For the Full Prescribing Information and Patient Information for Attruby, visit [Attruby.com/PI](http://Attruby.com/PI).

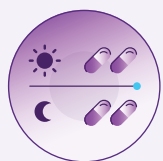


Actor portrayals.



# Attruby offers convenient daily dosing

It's important to take Attruby as prescribed. That way, there should always be enough medicine in your body to stabilize your TTR proteins.



**2 pills, twice daily, with or without food**

## The recommended dose of Attruby is 712 mg

- That's two 356-mg tablets taken orally, twice a day
- Swallow tablets whole. Do not cut, crush, or chew tablets

The Attruby packaging was designed as an adherence pack. It is conveniently labeled to help you distinguish between the day and time of each dose

Pairing Attruby with breakfast and dinner, or another regular activity like brushing your teeth, can help make it a normal part of your day.



Not actual size.

TTR=transthyretin.

Please see Important Safety Information throughout and accompanying [Important Facts Sheet](#) for Attruby. For the Full Prescribing Information and Patient Information for Attruby, visit [Attruby.com/PI](https://www.attruby.com/PI).

 **Attruby**<sup>™</sup>  
(acoramidis) 356 mg tablet

# Personalized support with Attruby

Introducing ForgingBridges™, a dedicated support team for people prescribed Attruby that can help you:



- Get started with Attruby
- Understand financial programs\*
- Navigate insurance
- Stay on track with treatment

Scan the QR code, call ForgingBridges at **1-888-55-BRIDGE** (1-888-552-7434), Mon-Fri, 8 AM to 8 PM ET or visit [ForgingBridges.com/Brochure](https://ForgingBridges.com/Brochure)



## Comprehensive financial support is a phone call away



For eligible patients, pay as little as a \$0 copay if you're commercially insured



The Patient Assistance Program (PAP) offers Attruby at no cost if you are eligible



The QuickStart Program may be able to provide you with a limited supply of Attruby at no cost if you experience coverage delays of 5 or more days

Assistance is available for all insurance types or even if you don't have insurance.

\*ForgingBridges Support Program Terms and Conditions are available upon request by calling ForgingBridges at 1-888-55-BRIDGE (1-888-552-7434).



Actor portrayals.



# Community support

Connecting with others through advocacy groups can be helpful for you and your loved ones.



[amyloidosis.org](http://amyloidosis.org)



[arci.org](http://arci.org)



[amyloidosisupport.org](http://amyloidosisupport.org)



[rarediseases.org](http://rarediseases.org)

These are not all of the patient advocacy groups for people living with ATTR-cardiac amyloidosis\* and their care partners. Your doctor may have other suggestions on groups that may work for you.

\*ATTR-cardiac amyloidosis is also known as transthyretin-mediated cardiomyopathy (ATTR-CM).

## What is Attruby?

Attruby is a prescription medicine used to treat adults with a disease that affects the heart muscle called cardiomyopathy of wild-type or variant transthyretin-mediated amyloidosis (ATTR-CM), to reduce death and hospitalization related to heart problems.

It is not known if Attruby is safe and effective in children.

## IMPORTANT SAFETY INFORMATION

**Before taking Attruby, tell your healthcare provider about all your medical conditions, including if you:**

- are pregnant or plan to become pregnant
- are breastfeeding or plan to breastfeed

**Tell your healthcare provider about all the medicines you take**, including prescription and over-the-counter medicines, vitamins, and herbal supplements.

**What are the possible side effects of Attruby?**

**The most common side effects of Attruby were mild and include:**

- diarrhea
- stomach-area (abdominal) pain

These are not all of the possible side effects of Attruby.

Call your doctor for medical advice about side effects. You may report side effects to FDA at 1-800-FDA-1088 or [www.fda.gov/medwatch](http://www.fda.gov/medwatch).

Please see Important Safety Information throughout and accompanying **Important Facts Sheet** for Attruby. For the Full Prescribing Information and Patient Information for Attruby, visit [Attruby.com/PI](http://Attruby.com/PI).





Attruby helps positively impact survival, hospitalizations due to heart issues, and health-related quality of life\*

To learn more about Attruby, scan the QR code or visit [Attruby.com/Brochure](https://Attruby.com/Brochure)



\*The treatment effect of Attruby on health status was assessed using the Kansas City Cardiomyopathy Questionnaire-Overall Summary (KCCQ-OS) score composed of the Physical Limitation, Symptom, Social Limitation, Quality of Life, and Self-Efficacy domains, respectively.

### What is Attruby?

Attruby is a prescription medicine used to treat adults with a disease that affects the heart muscle called cardiomyopathy of wild-type or variant transthyretin-mediated amyloidosis (ATTR-CM), to reduce death and hospitalization related to heart problems.

It is not known if Attruby is safe and effective in children.

### Important Safety Information (cont'd)

What are the possible side effects of Attruby?

The most common side effects of Attruby were mild and include:

- diarrhea
- stomach-area (abdominal) pain

Please see Important Safety Information throughout and accompanying [Important Facts Sheet for Attruby](#). For the Full Prescribing Information and Patient Information for Attruby, visit [Attruby.com/PI](https://Attruby.com/PI).

Attruby™ and the BridgeBio, Inc. corporate logo are trademarks of BridgeBio, Inc. All other trademarks are the property of their respective owners.

© 2024 BridgeBio, Inc. All rights reserved. MAT-US-ACO-0318 V1



Actor portrayals.







## IMPORTANT FACTS

Attruby™ (ah-troo-be)  
(acoramidis)  
tablets

This is only a brief summary of important information about Attruby and does not replace talking to your doctor about your condition and your treatment.

### What is Attruby?

Attruby is a prescription medicine used to treat adults with a disease that affects the heart muscle called cardiomyopathy of wild-type or variant transthyretin-mediated amyloidosis (ATTR-CM), to reduce death and hospitalization related to heart problems.

It is not known if Attruby is safe and effective in children.

### Before taking Attruby, tell your healthcare provider about all your medical conditions, including if you:

- are pregnant or plan to become pregnant. It is not known if Attruby will harm your unborn baby. Tell your healthcare provider right away if you become pregnant or think you may be pregnant during treatment with Attruby. You may also report your pregnancy by calling the BridgeBio reporting line at 1-844-550-2246.
- are breastfeeding or plan to breastfeed. It is not known if Attruby passes into your breast milk. Talk to your healthcare provider about the best way to feed your baby during treatment with Attruby.

**Tell your healthcare provider about all the medicines you take**, including prescription and over-the-counter medicines, vitamins, and herbal supplements.

### How should I take Attruby?

- Take Attruby exactly as your healthcare provider tells you to.
- Take Attruby tablets by mouth 2 times a day, with or without food.
- Swallow tablets whole. Do not cut, crush, or chew tablets.



### What are the possible side effects of Attruby?

**The most common side effects of Attruby were mild and include:**

- stomach-area (abdominal) pain
- diarrhea

These are not all of the possible side effects of Attruby.

Call your doctor for medical advice about side effects. You may report side effects to FDA at 1-800-FDA-1088.

### How should I store Attruby?

- Store Attruby tablets at room temperature between 68°F to 77°F (20°C to 25°C).
- Store in original blister card until use to protect from moisture.

**Keep Attruby and all medicines out of the reach of children.**

### General information about the safe and effective use of Attruby.

Medicines are sometimes prescribed for purposes other than those listed in a Patient Information leaflet. Do not use Attruby for a condition for which it was not prescribed. Do not give Attruby to other people, even if they have the same symptoms you have. It may harm them. You can ask your pharmacist or healthcare provider for information about Attruby that is written for health professionals.

### What are the ingredients in Attruby?

**Active ingredient:** acoramidis

**Inactive ingredients:** croscarmellose sodium, magnesium stearate, microcrystalline cellulose, and silicon dioxide. The film coating and printing ink contain black iron oxide, glyceryl monocaprylocaprate, hypromellose, polyvinyl alcohol, propylene glycol, talc, titanium dioxide, and vinyl alcohol graft copolymer.

### For more information

This is only a brief summary of important information about Attruby. Talk to your healthcare provider or pharmacist to learn more. **For more information about Attruby, go to [Attruby.com](https://www.attruby.com) or call 1-844-550-2246.**

Distributed by:  
BridgeBio Pharma, Inc.  
Palo Alto, CA 94304